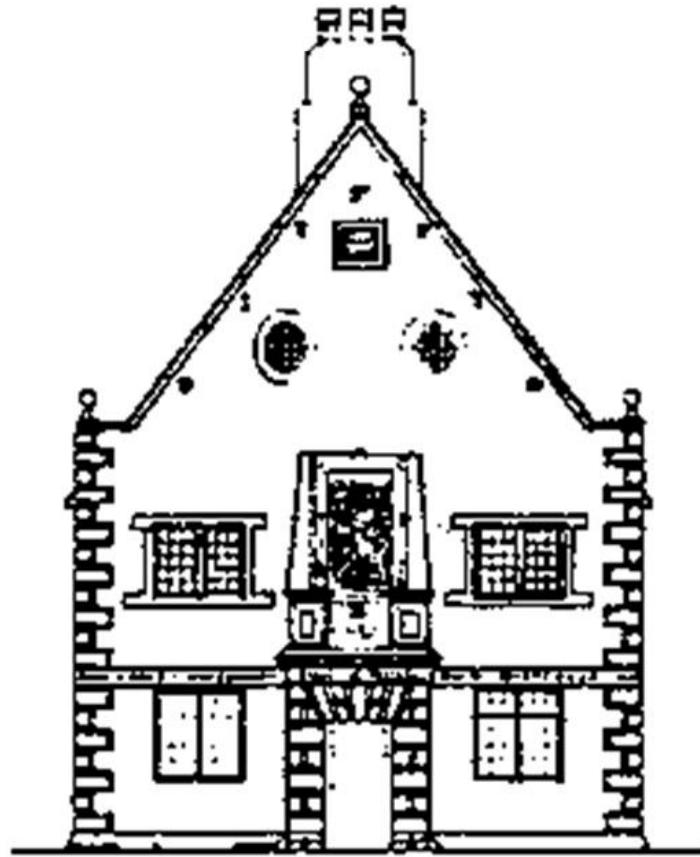


# Bunny C of E Primary School



## Policy for Religious Education and for Collective Worship

Author: C.Bee

Reviewed: Summer 2023, Summer 2026

Next review: Summer 2029

## **Context**

Bunny School is a Church of England (voluntary controlled) primary school. We work according to the guidelines contained within the Nottinghamshire Agreed Syllabus for Religious Education. We recognise the variety of backgrounds from which our pupils come; Christian, secular and other faiths. We intend to affirm the home background and experiences of each child. We are glad to have the support of members of local faith communities in RE lessons, assemblies and school life. We recognise the inter-relationship between pupils' spiritual, moral, social and cultural development, and the leading role Religious Education and Collective Worship can play in these areas.

## **Religious Education**

Religious Education at Bunny CE Primary School will be provided in line with the legal requirements. These are that:

- The curriculum will include provision for religious education of all pupils except those whose parents request them to be withdrawn in whole or in part.
- The content of RE shall reflect the fact that religious traditions in Great Britain are in the main Christian, and have had a major influence on British culture and society, while taking account of the teaching and practices of the other principal religions and belief systems represented in Great Britain.
- The content of RE shall reflect the fact that Bunny School is a Church of England (Controlled) school.
- The RE which is delivered shall be in accordance with the locally agreed syllabus for Nottinghamshire LEA.

Within the framework of the law, our school aims are:

- To enable each pupil to explore our shared human experience and the questions of meaning and purpose which arise from our experiences.
- To introduce pupils to the beliefs and practices of some of the great religions of the world, particularly those represented in Nottinghamshire.
- To promote respect, sensitivity and cultural awareness by teaching about the religions represented in our community, to affirm each child in their own faith or belief tradition
- To provide pupils with opportunities for spiritual, moral, social and cultural development
- To develop the ability of pupils to think about, and develop for themselves, beliefs and values by which they can live.

## **Time allocation**

The Nottinghamshire Agreed Syllabus for RE endorses the recommendation that RE should be taught for a minimum of 36 hours per year at Key Stage 1 and 45 hours per year at Key Stage 2. This minimum requirement may be fulfilled through a mixture of weekly lessons, theme days, blocks of teaching and special events.

## **Scheme of Work**

RE will be taught according to the Nottinghamshire Agreed Syllabus using resources including Understanding Christianity and NATRE "RE today". Details of the topics to be taught in each class are listed within the RE long term plans. Collective worship may

complement learning in Religious Education but does not replace it. RE time does not include assembly or collective worship time, even where the assembly provides a starting point for curricular work.

## **Teaching and Learning**

We aim to use a variety of active learning strategies in teaching RE, for example; art, drama, music, discussion activities, visits, visitors, posters, pictures, ICT, film clips and displays. We recognise the particular value of working with artefacts and people from faith communities. Most artefacts and teaching resources are kept centrally in school. Adults and children are encouraged to handle religious artefacts appropriately and sensitively. Whole school policy with regard to SEN and differentiation applies to RE. We are alert to the fact that some children have special and deep experience of religion through family practice. We aim to provide for continuity and progression through the school. We report on progress in RE to parents as required. We use "What If?" learning and the Curious Curriculum to enable children to learn through an enquiry based curriculum with frequent reference to our values and concepts. This means that themes discussed in RE lessons may be explored in many ways through the whole of the curriculum.

## **Collective Worship**

### **Aims and objectives**

As a Church of England primary school founded on Christian values and attitudes we aim to encourage secure and caring relationships, developing everyone to their full potential.

We aim to secure for every child the opportunity to develop his or her capability and interests to the maximum by attaining the skills, knowledge and understanding required; physically, intellectually, spiritually and socially, to enable him or her to choose freely his or her future role in society.

We aim to contribute towards the spiritual development of our pupils in Christian worship by;

1. fostering God's family in bringing pupils together in fellowship
2. creating an atmosphere where those who wish to worship may do so
3. encouraging in pupils a reflective caring approach to life
4. increasing sensitivity towards, and awareness of, the search for the meaning of life's mysteries
5. introducing pupils to the practice of religious worship through prayer, music, story, drama, art and so on.

As far as possible we try to ensure that our collective worship is relevant to the age and aptitude of pupils.

### **Organisation**

Collective worship takes place each day, usually at 3.00pm. On most days, this is for the whole school in the hall, led by staff or regular visitors from local churches. On some days a class or key stage assembly may be held. Collective worship follows a range of themes and resources and most include Bible stories which unpack our school values and concepts. Our "Star Assembly" on Fridays provides an opportunity for the children to reflect on their week in school and to celebrate the successes and achievement of

children in school. Certificates for house points and trophies are presented (see Behaviour and relationships Policy).

Children are encouraged to actively participate in collective worship through their singing, actions, drama, answering questions and suggesting ideas. Prayer and reflection feature strongly in collective worship. Children are often given time to reflect on how the theme relates to them. Informal prayers develop from this reflection. The Lord's Prayer (modern version) is known by the children and used frequently.

We are developing the children's role in leading collective worship and prayer within their own classrooms and for the whole school. Children are always invited rather than obliged to lead acts of worship and we are sensitive to their developing understanding of their own beliefs and values.

A range of foci are used. These include music, pictures, candles and the cross.

In addition, church services are often held at Harvest, Christmas, Ash Wednesday, Easter and the end of the summer term. There may be special services for particular events such as the Thy Kingdom Come initiative or local occasions.

### **Equal opportunities**

As a Church of England Controlled Primary School our daily act of collective worship is broadly Christian, is non-denominational and reflects cultural diversity. We aim to achieve a broad and balanced approach in our collective worship.

### **Withdrawal**

We note the rights of parents to withdraw their children wholly or in part from RE and collective worship and also of teachers to withdraw from collective worship. We aim to provide an open curriculum which can be taught to all, by all. Please refer any questions about withdrawals to the RE coordinator and the Head Teacher.